

PLAN: herbestemmen van r.k. kerk H. Matthaëus naar 17 appartementen te Azewijn

OPDRACHTGEVER: EV Capital

VOORLOPIG ONTWERP

BLAD **V1**

SCH 1:100

GET r.herlaar

DAT 16-09-21

GEW

h21-991



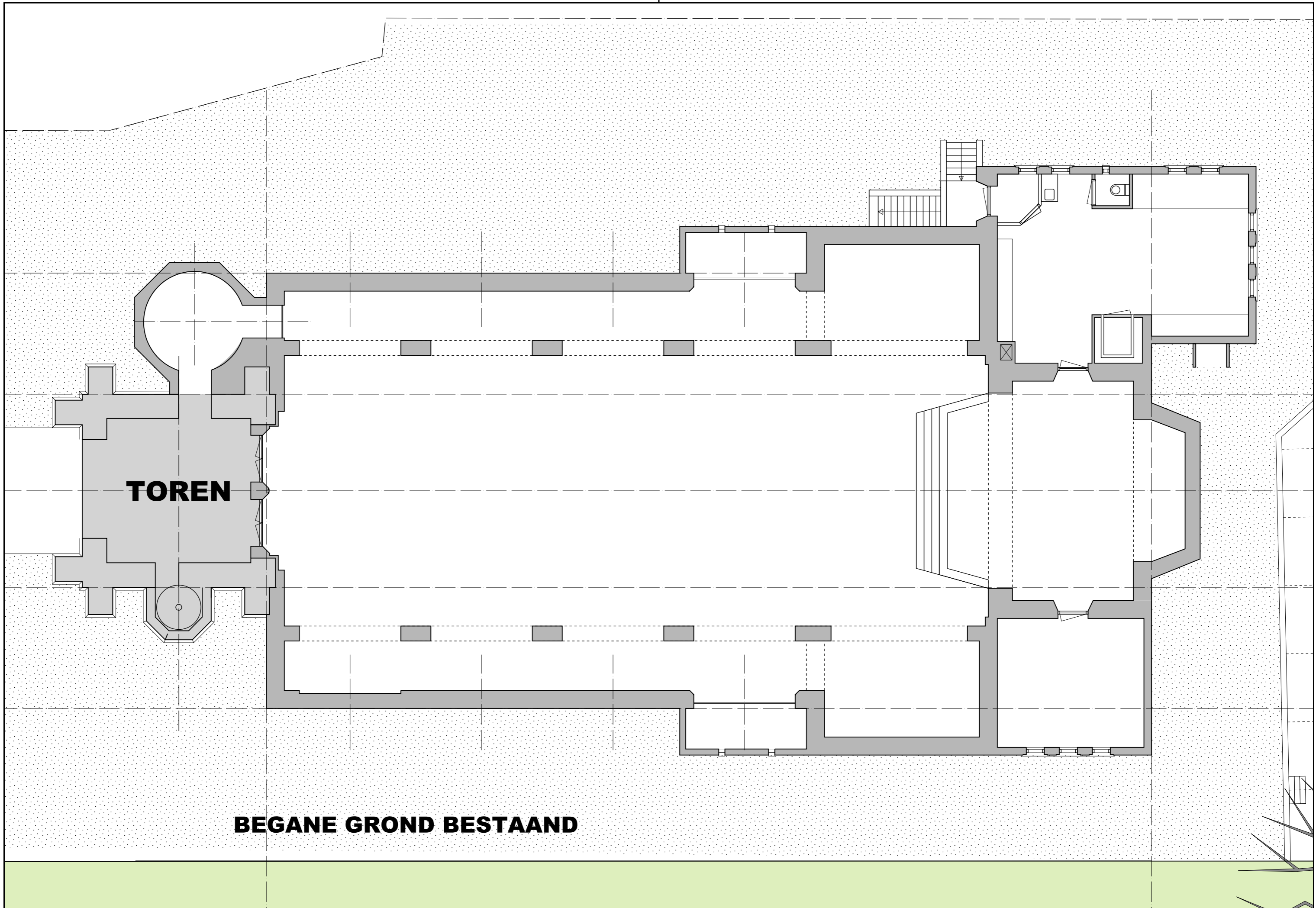
bouwkundig tekenburo **herlaar**

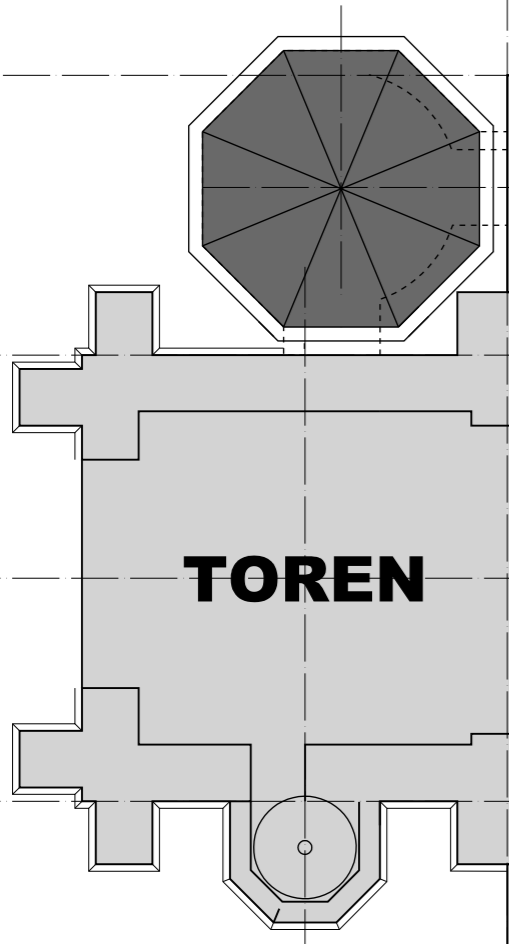
gasthuislaan 2
6883 JC VELD
telefoon 026 - 205 10 22

info@tekenburo-herlaar.nl
www.tekenburo-herlaar.nl
Mobiel 06 21277595

TOREN

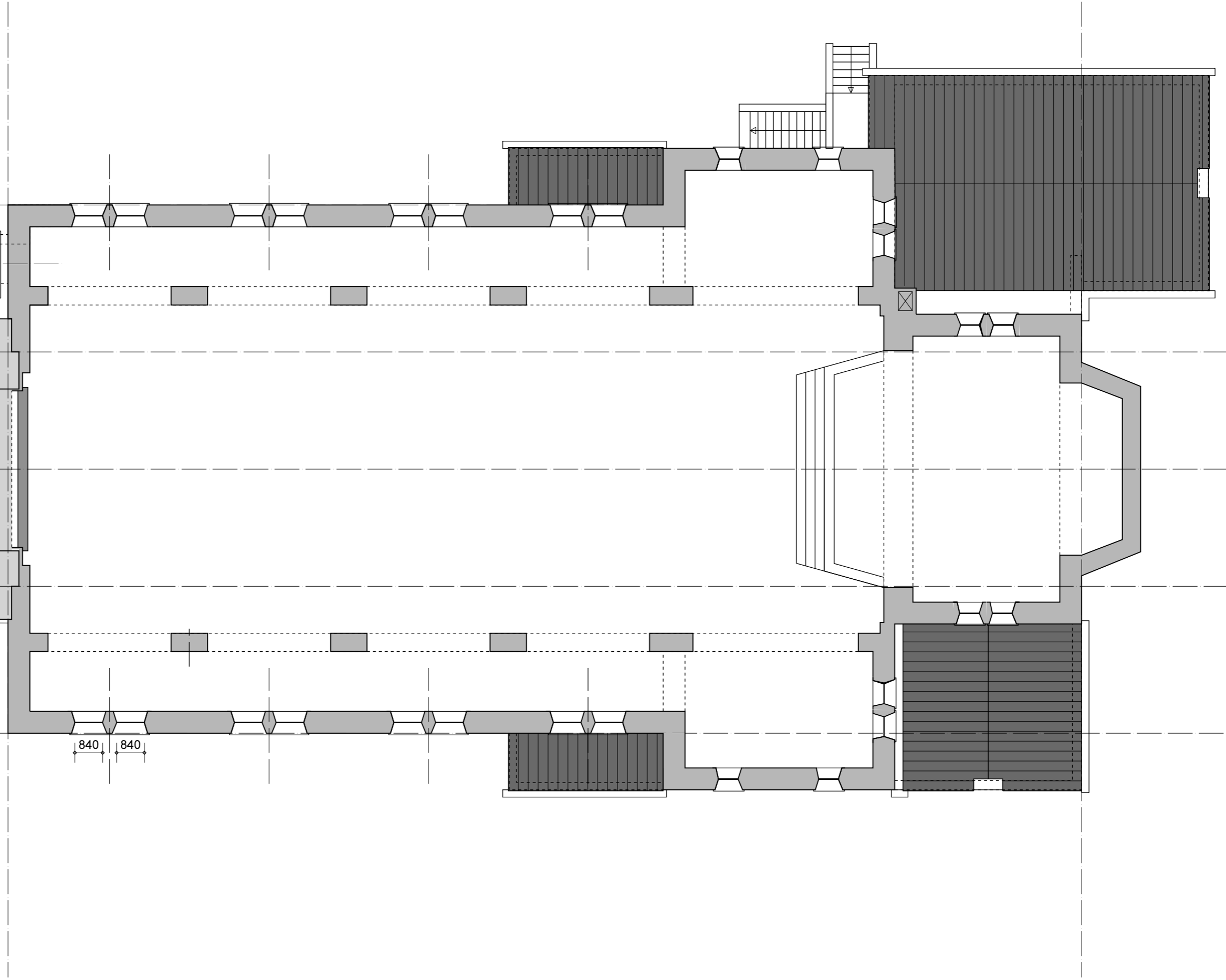
BEGANE GROND BESTAAND



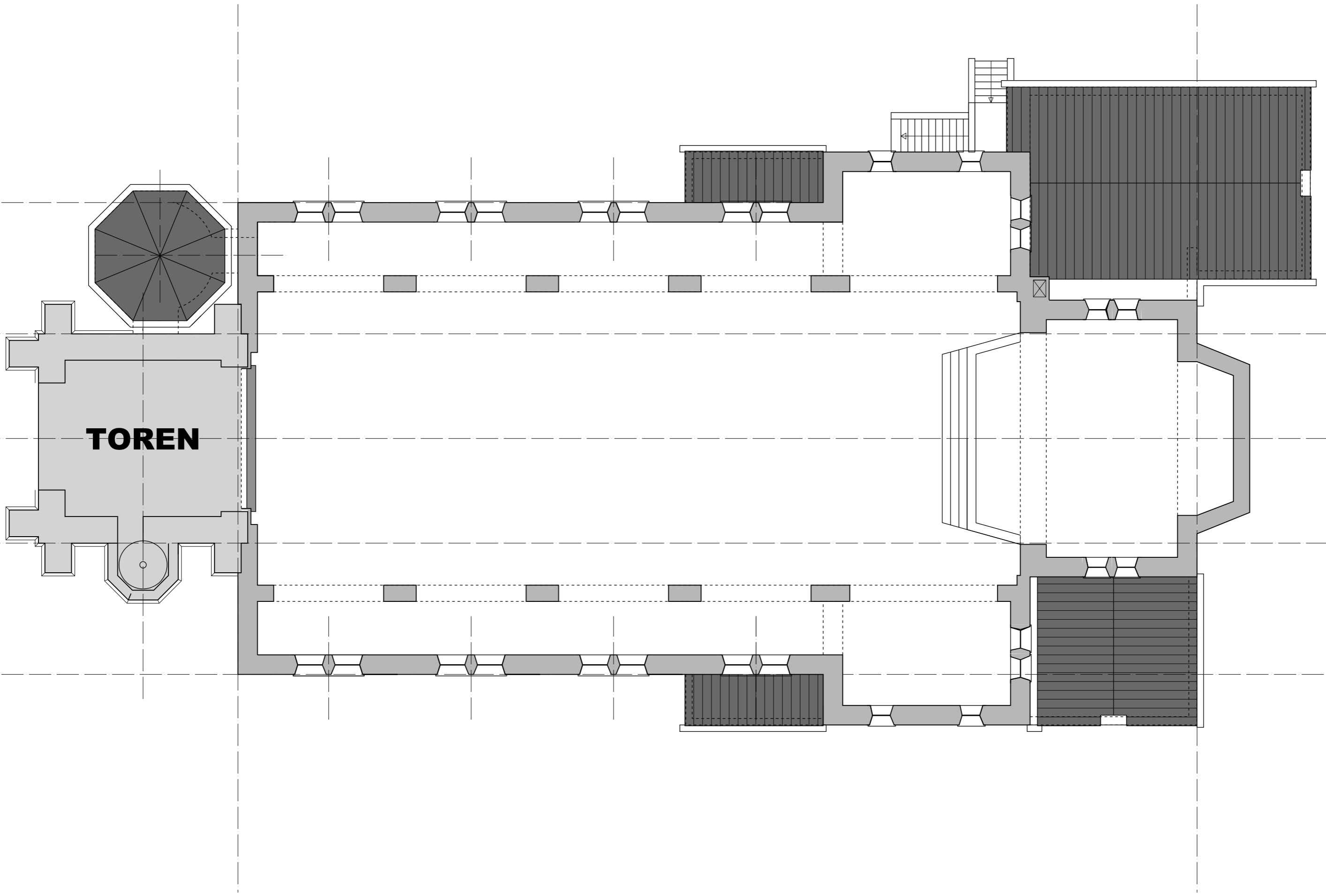


TOREN

840 840

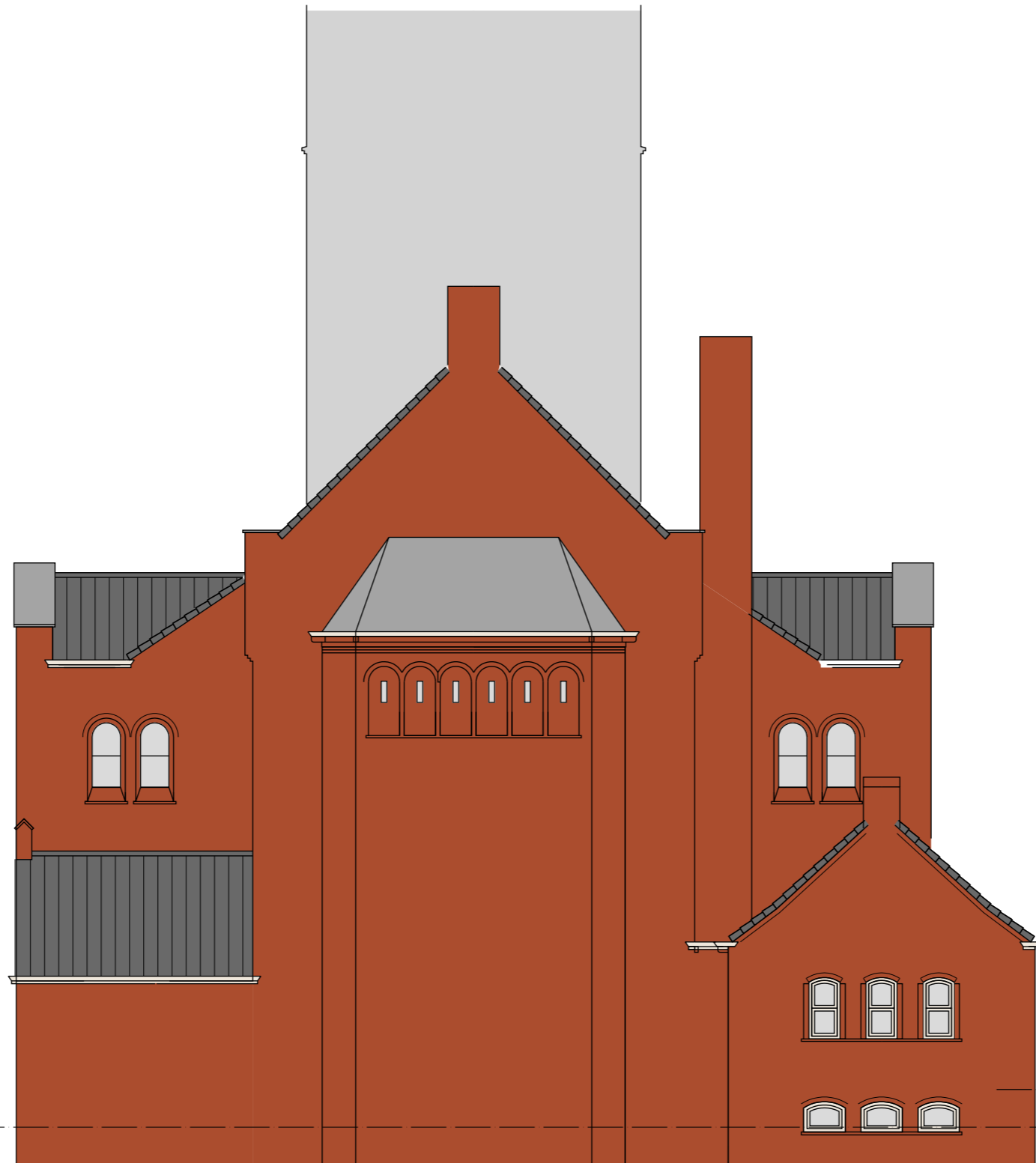


TOREN





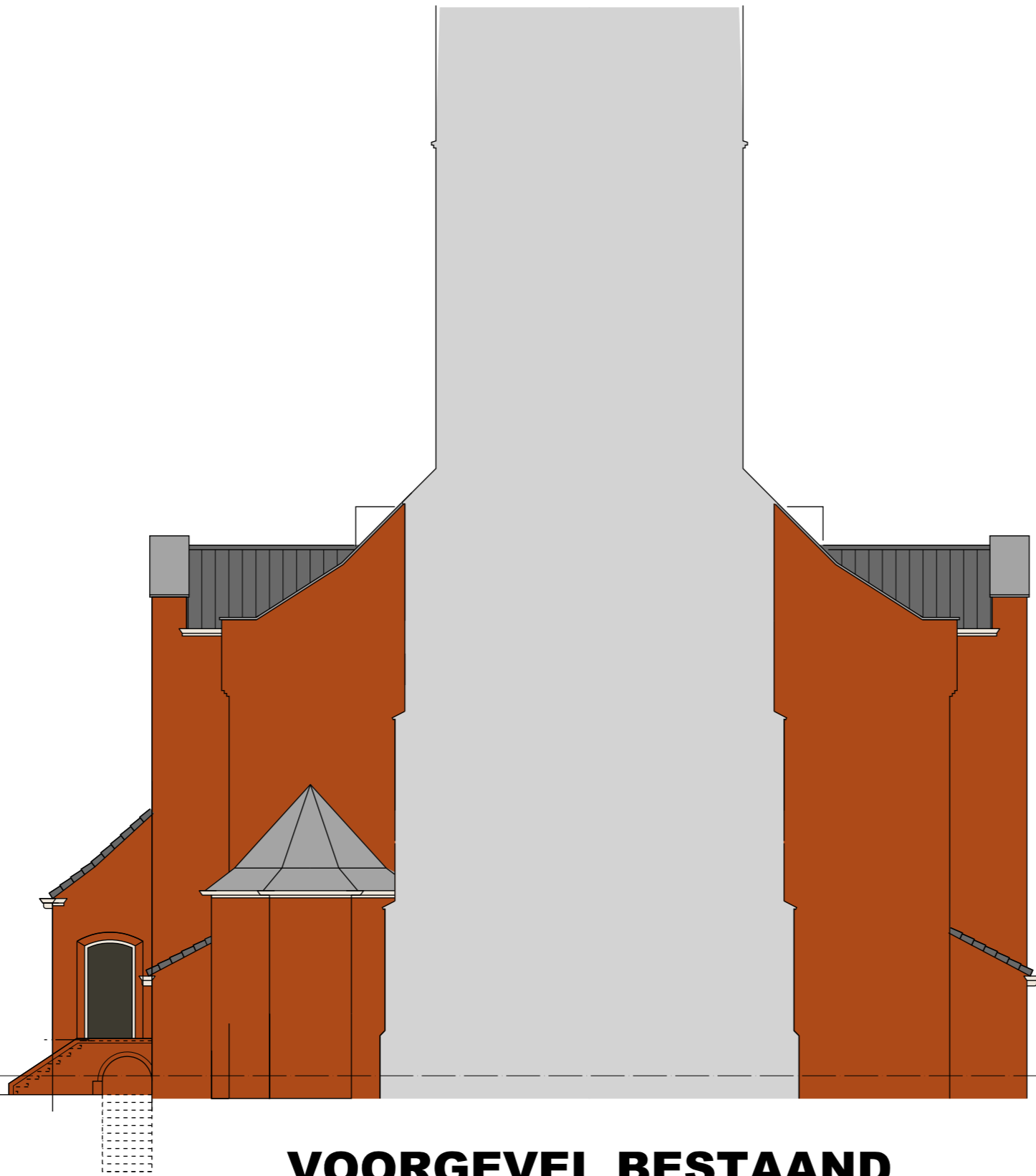
ZIJGEVEL RECHTS BESTAAND



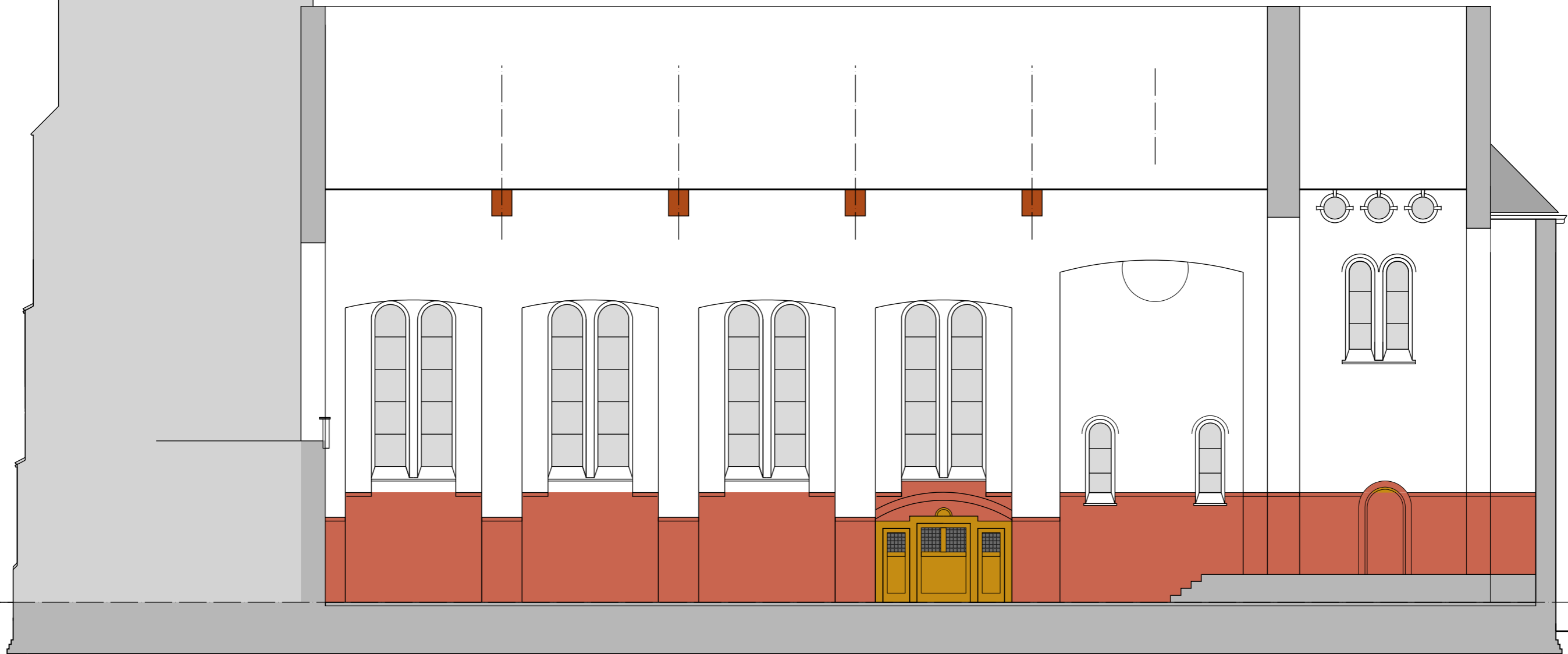
ACHTERGEVEL BESTAAND



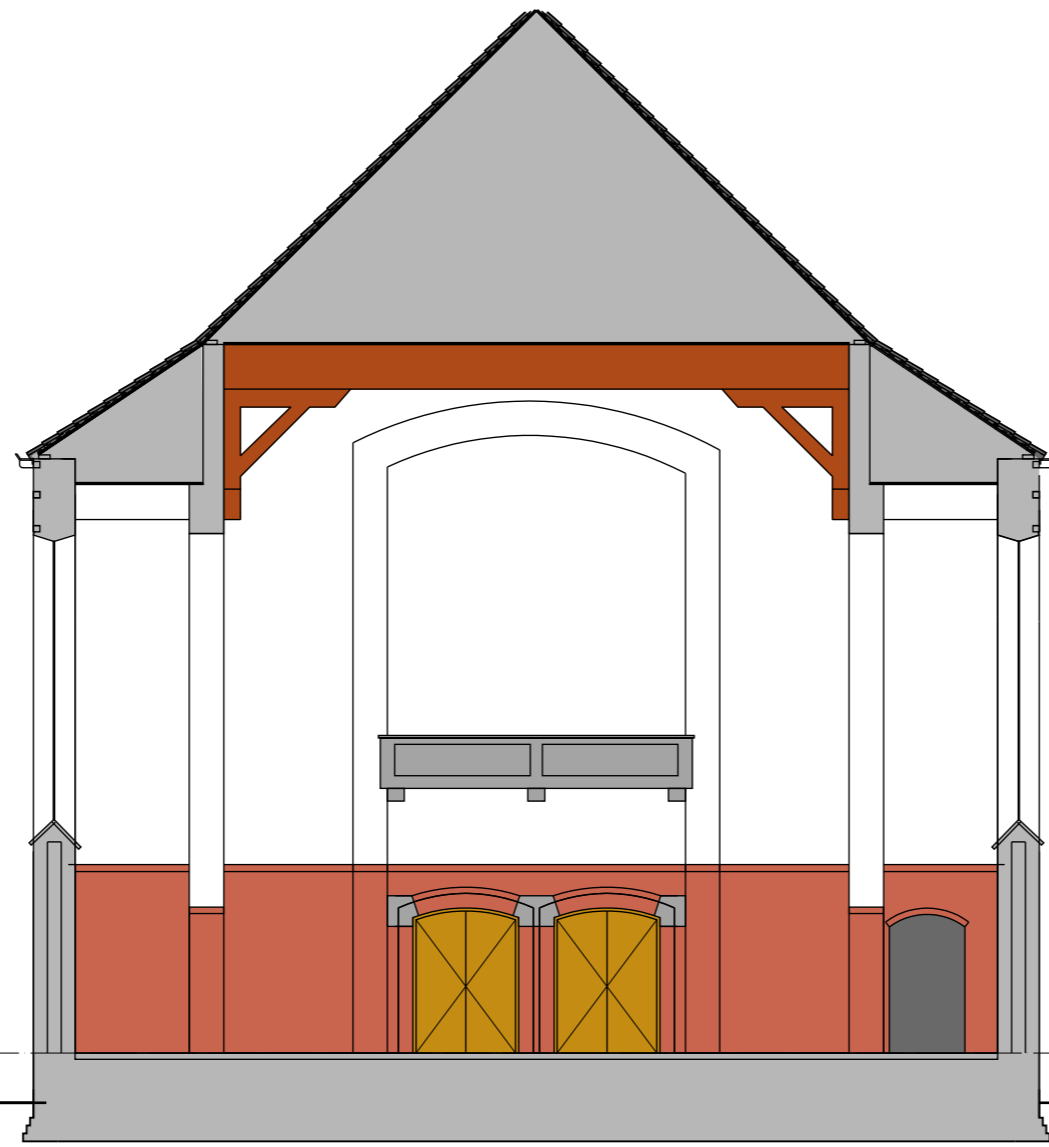
ZIJGEVEL LINKS BESTAAND



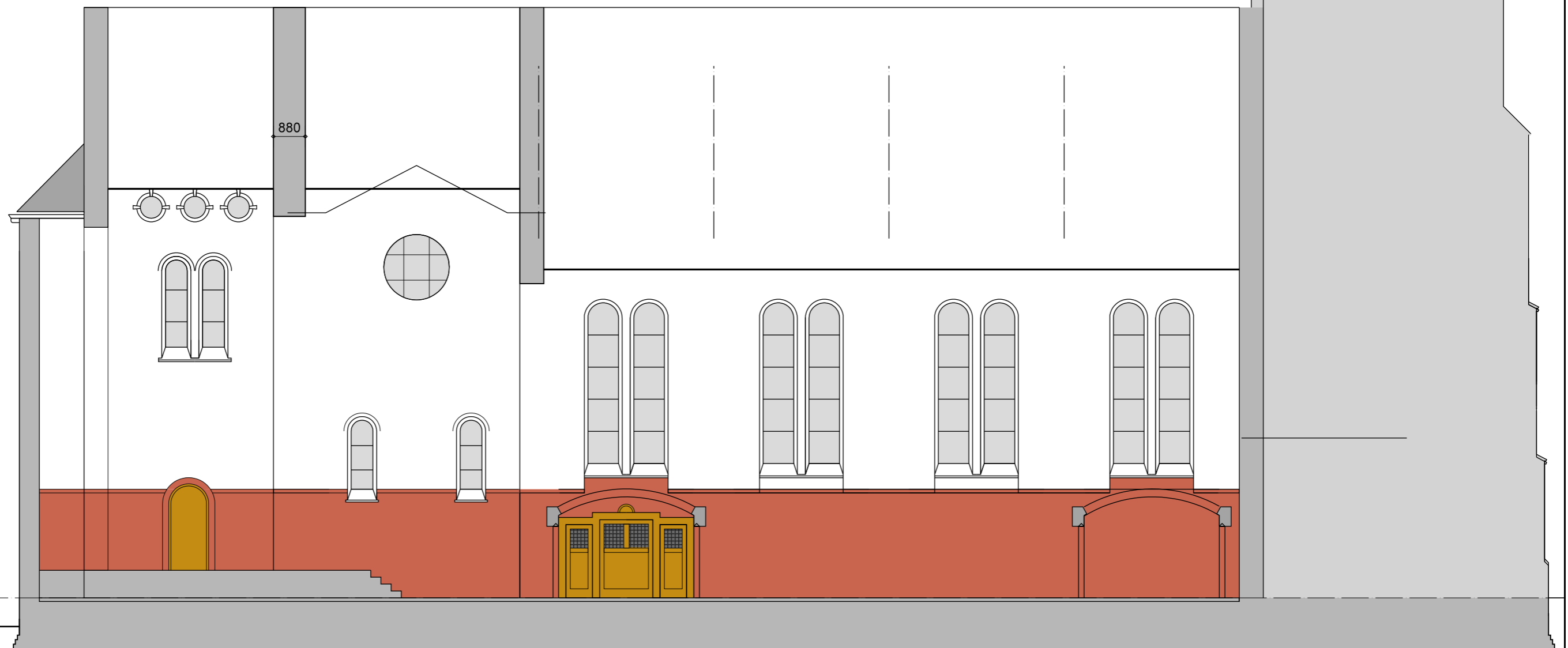
VOORGEVEL BESTAAND



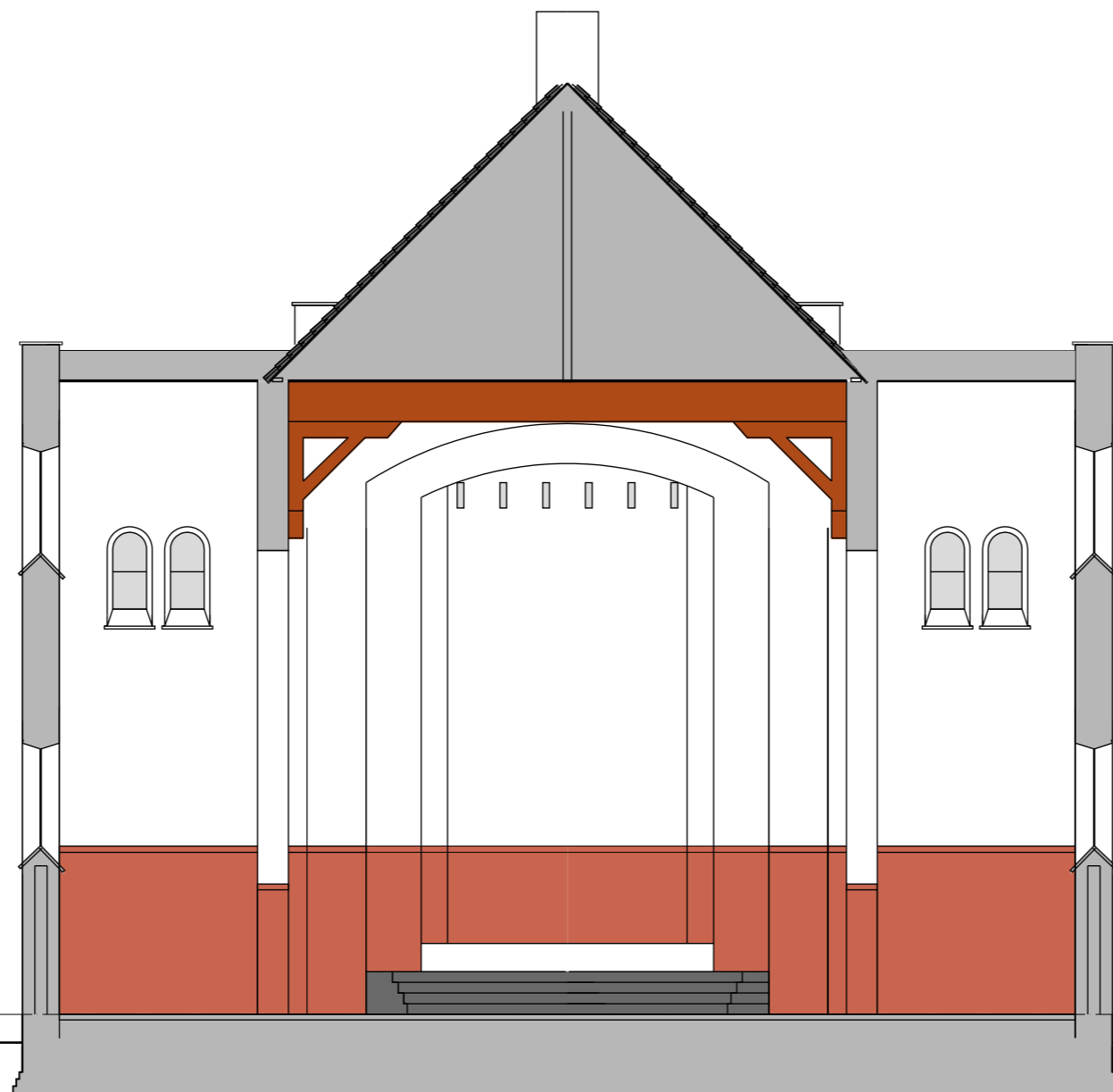
DOORSNEDE A-A



DOORSNEDE B-B



DOORSNEDE C-C

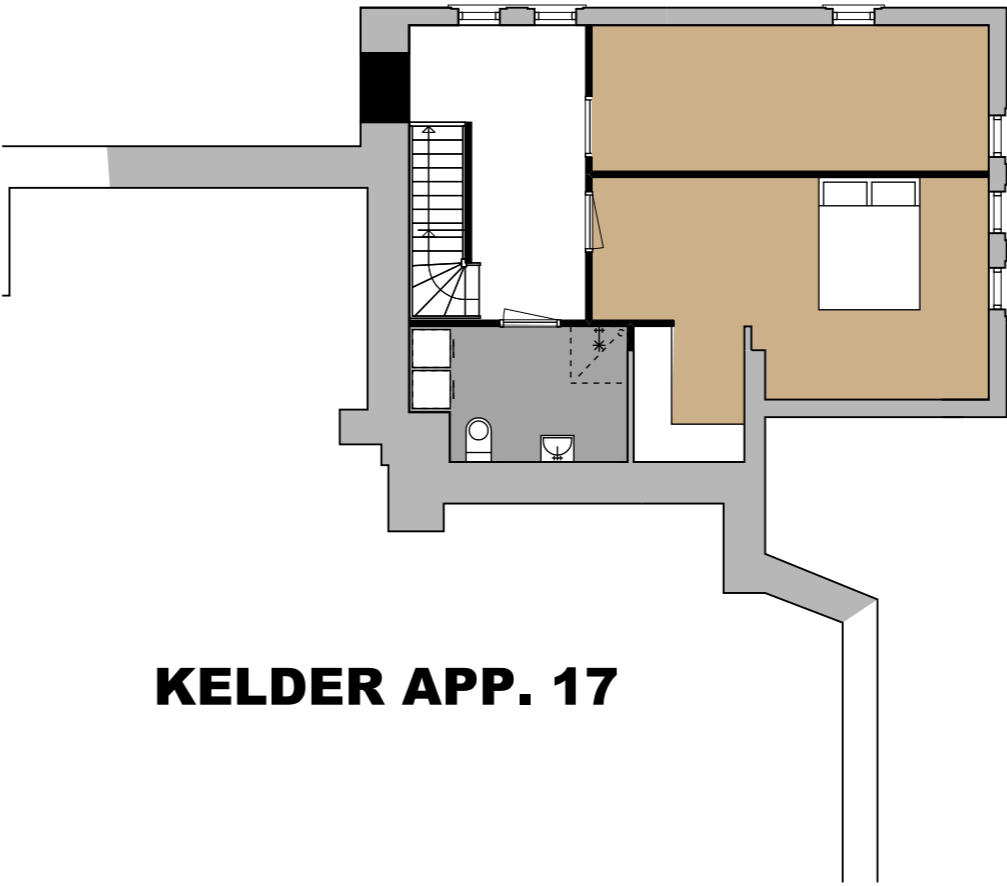


DOORSNEDE D-D



TOREN

BEGANE GROND GEWIJZIGD



KELDER APP. 17

32450

7080

TOREN

12

13

14

15

16

7

8

9

10

11

1e VERDIEPING GEWIJZIGD



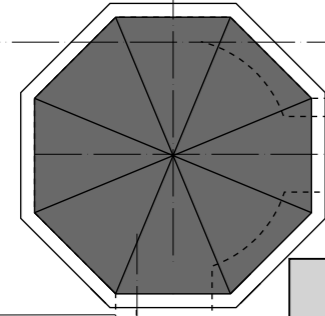
32450

099

00861

0895

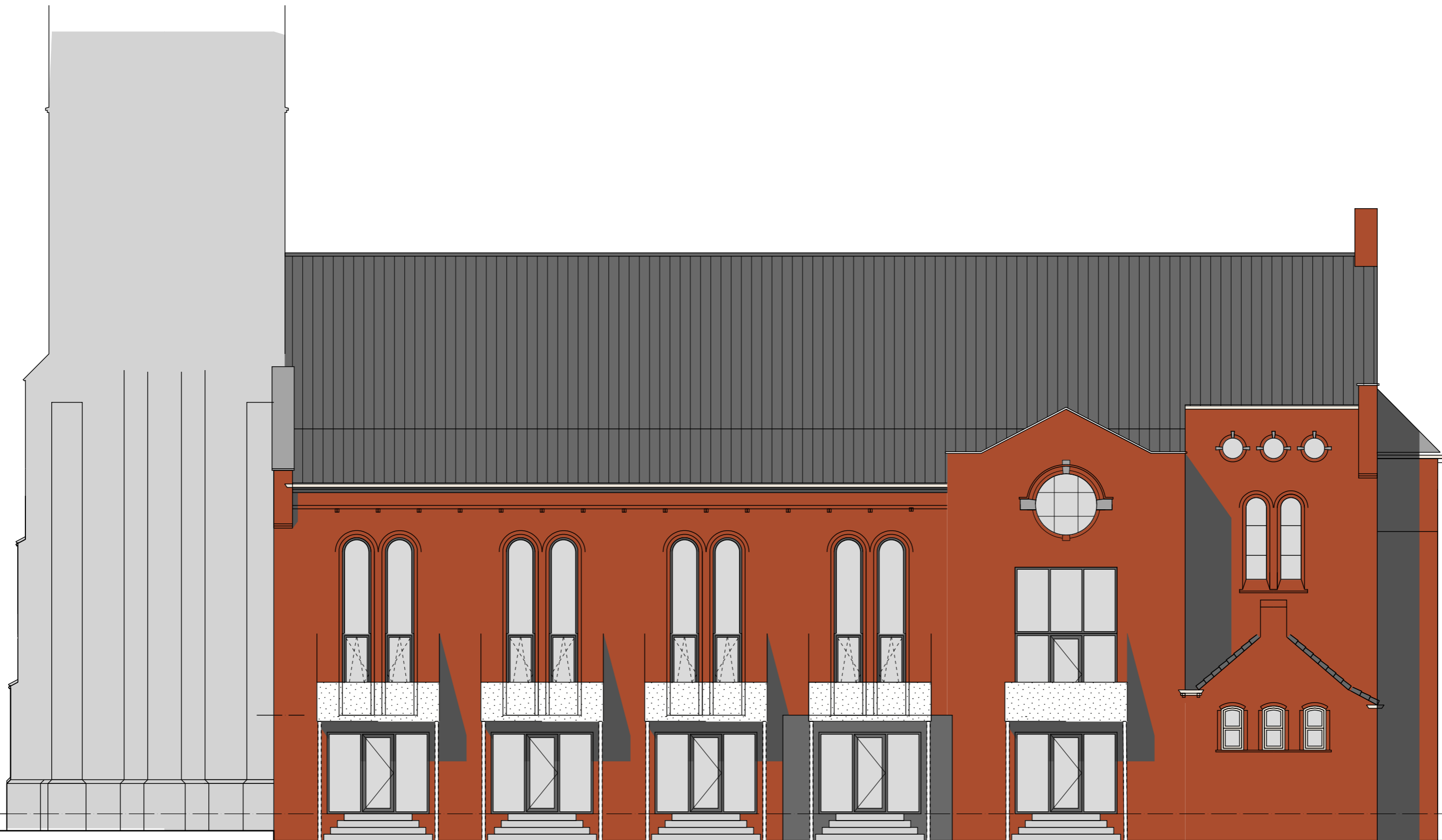
099



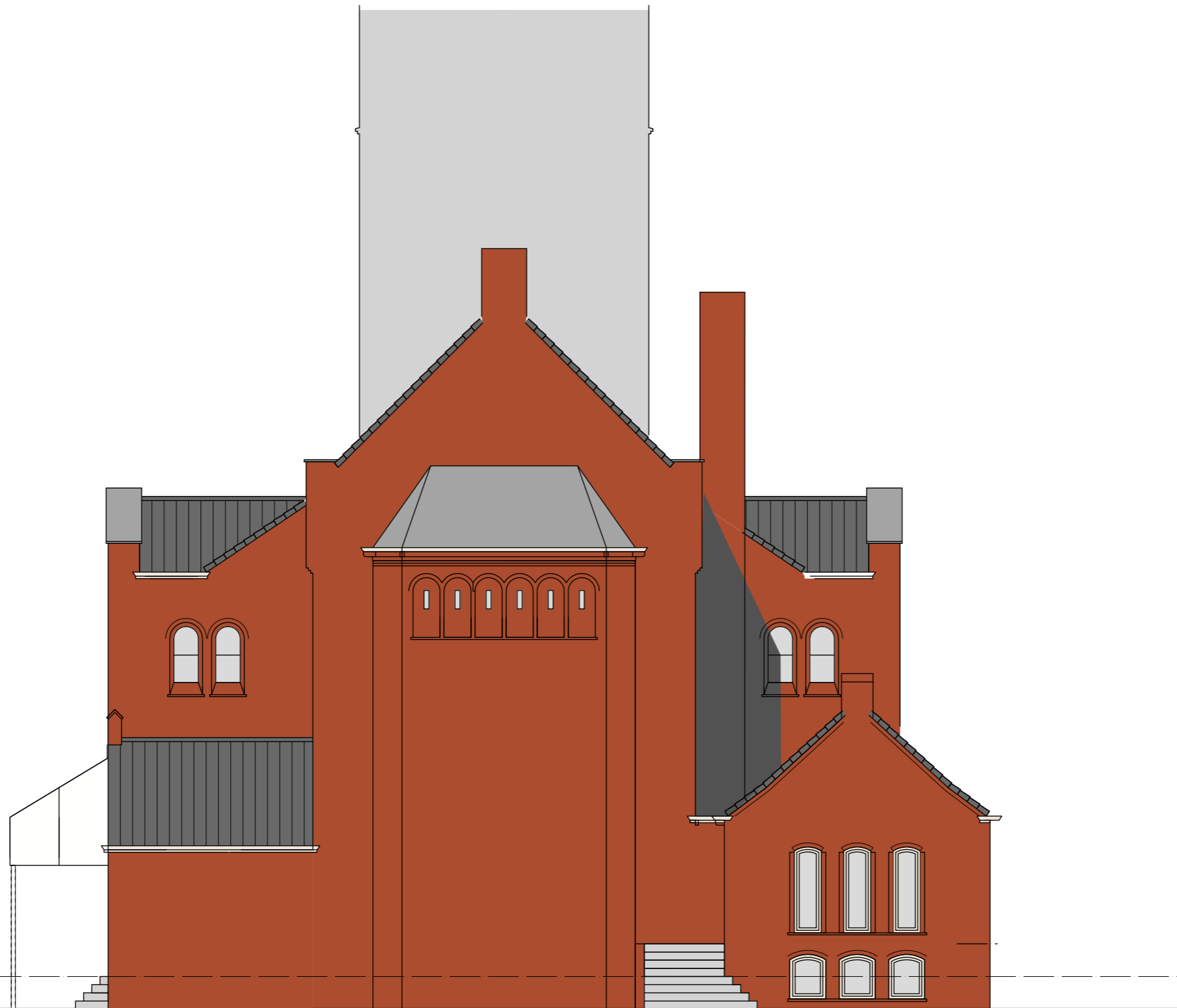
TOREN



2e VERDIEPING GEWIJZIGD



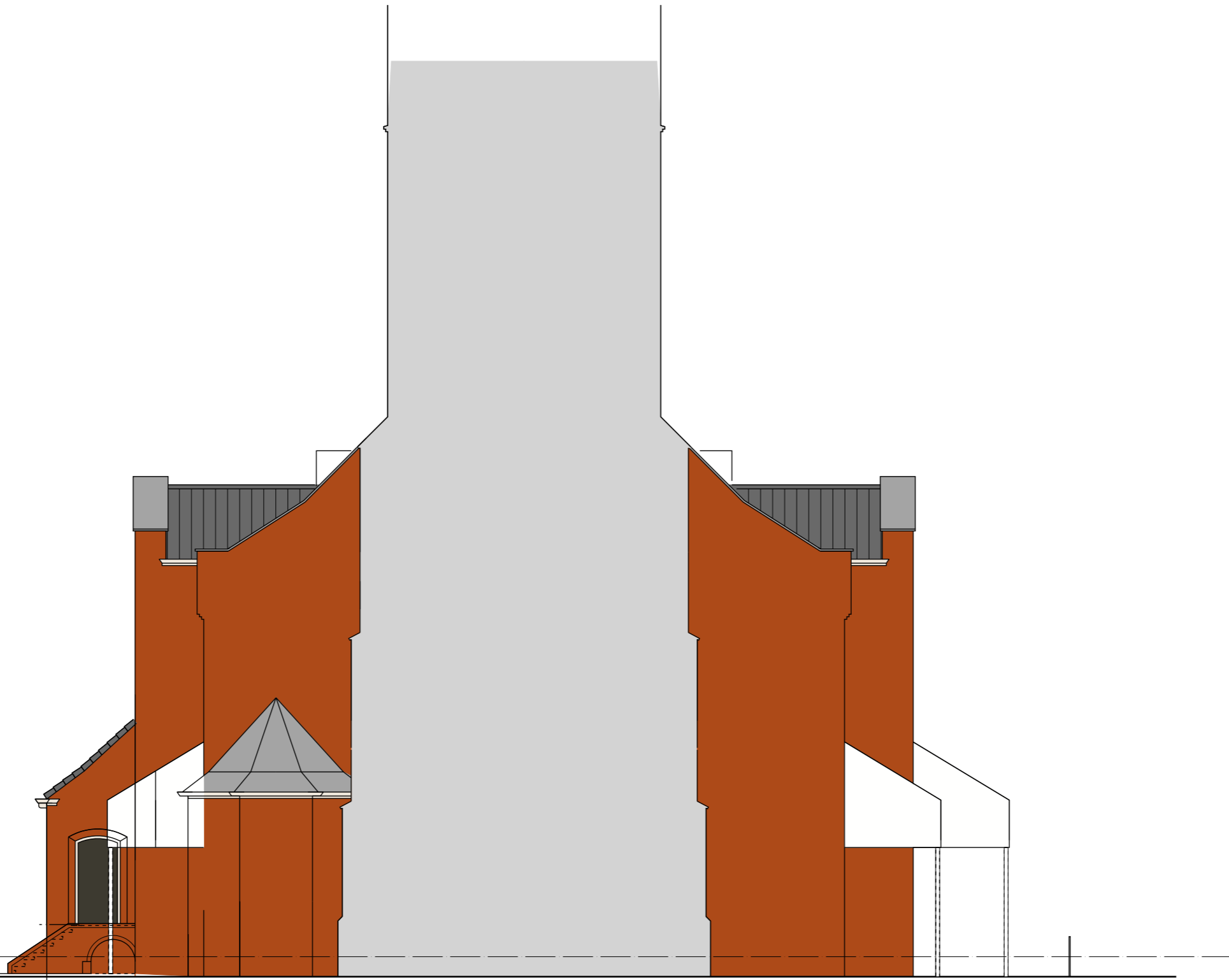
ZIJGEVEL RECHTS GEWIJZIGD



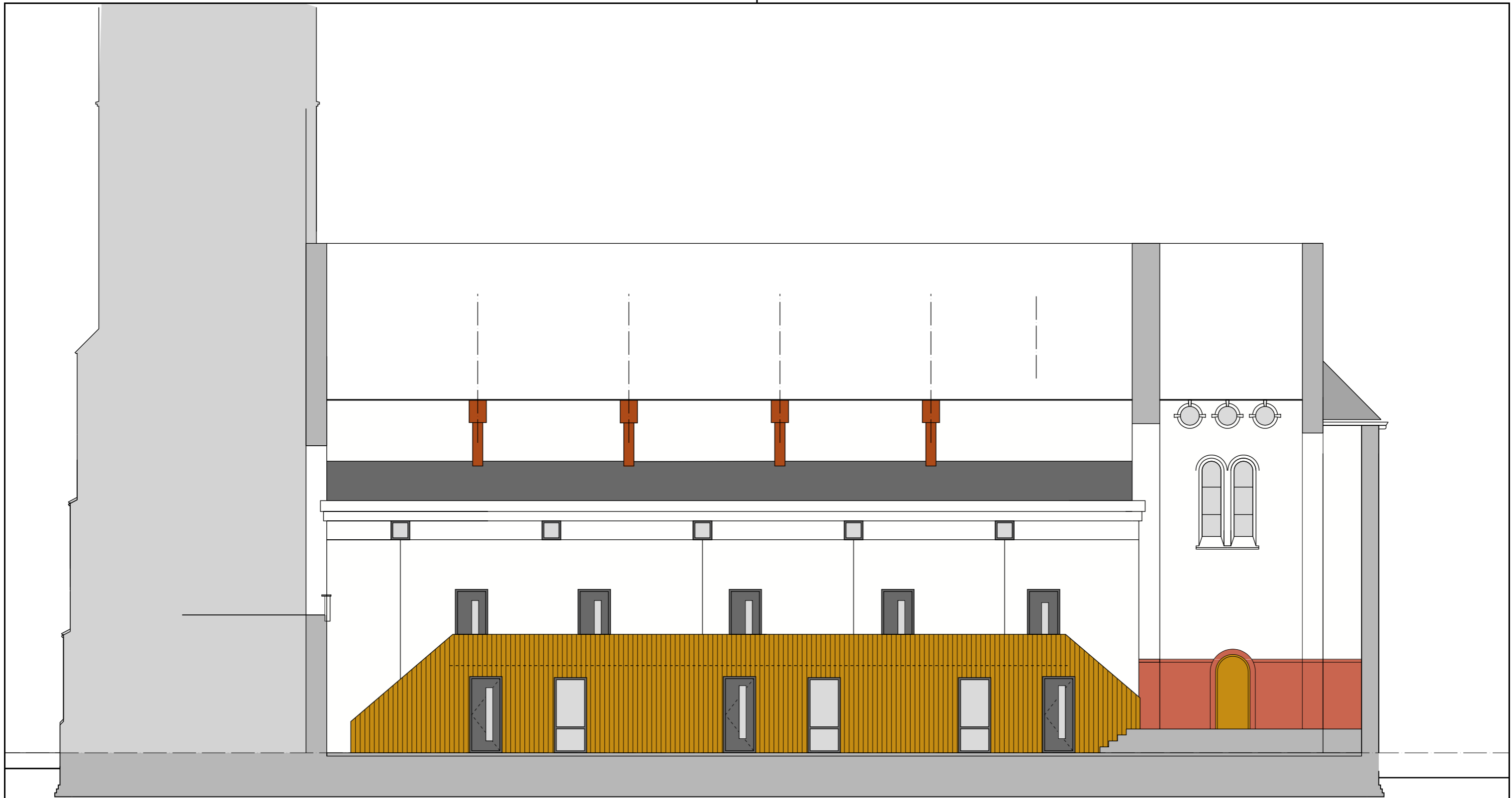
ACHTERGEVEL GEWIJZIGD



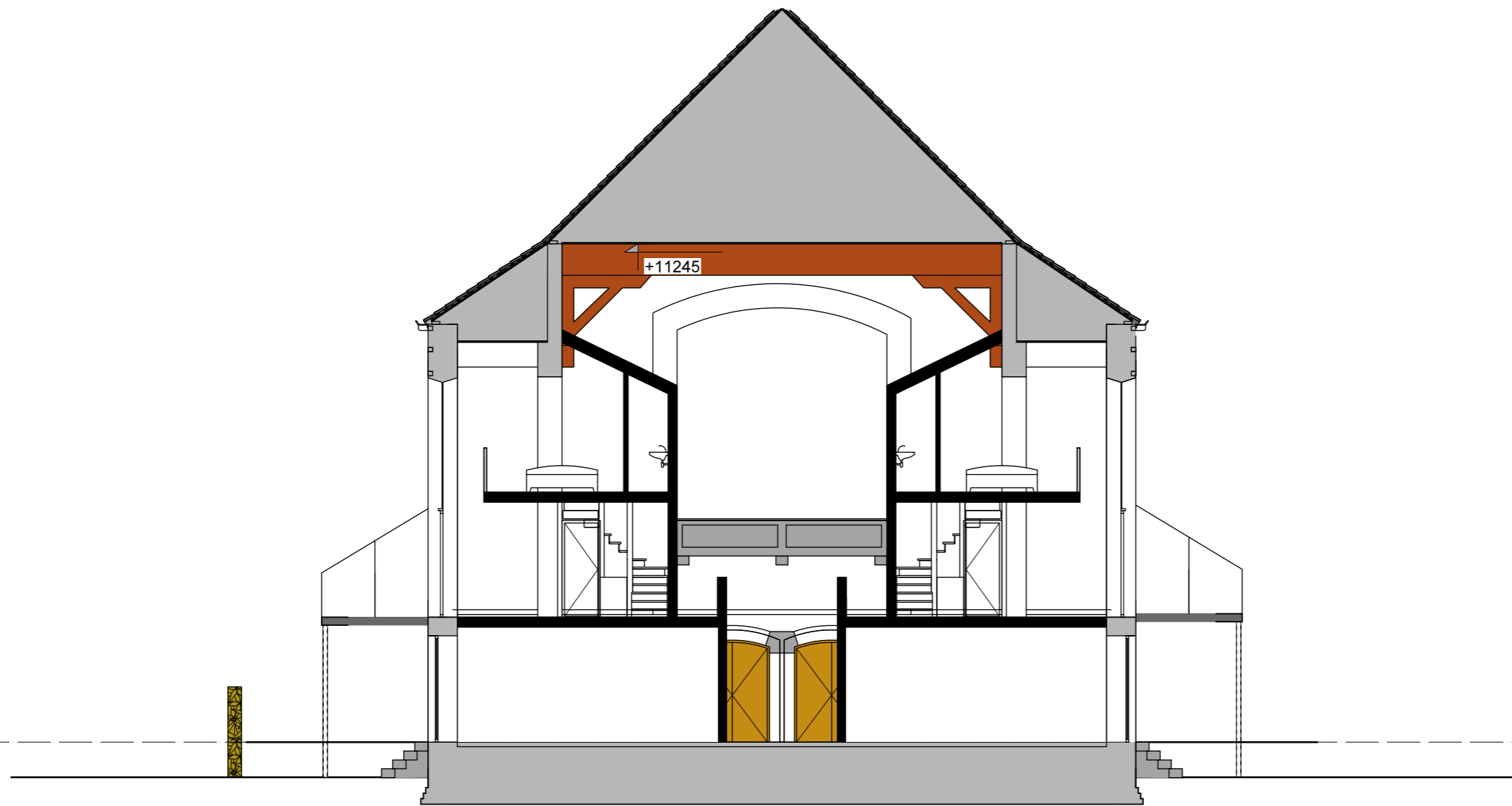
ZIJGEVEL LINKS GEWIJZIGD



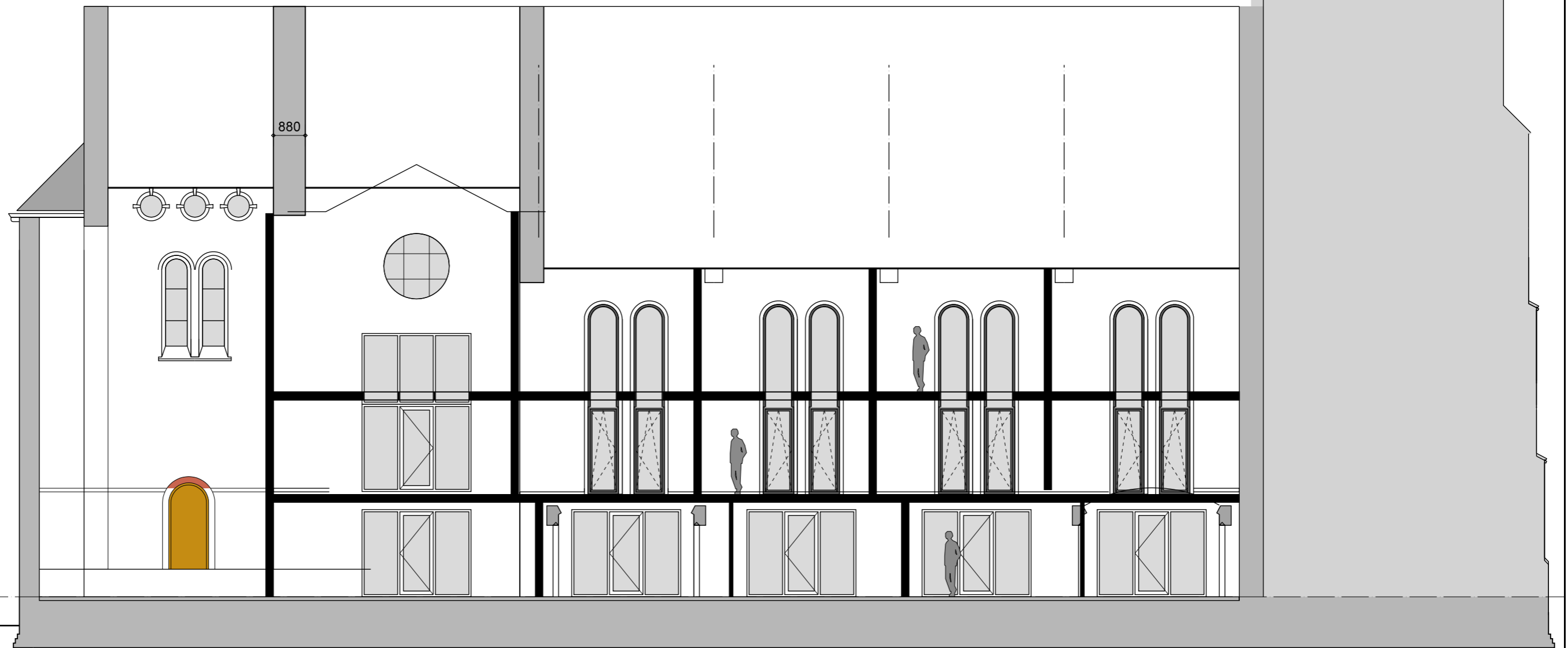
VOORGEVEL BESTAAND



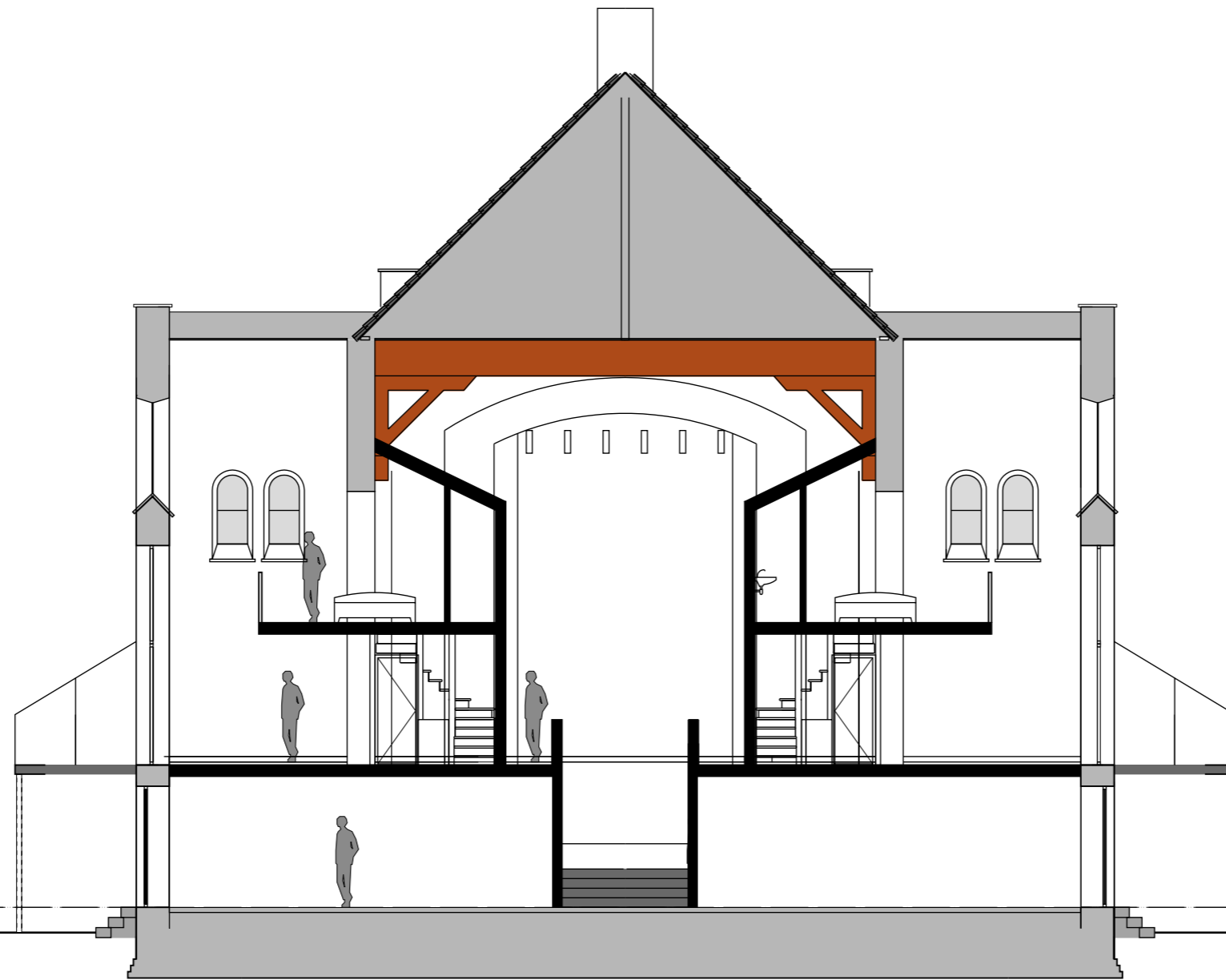
DOORSNEDE A-A



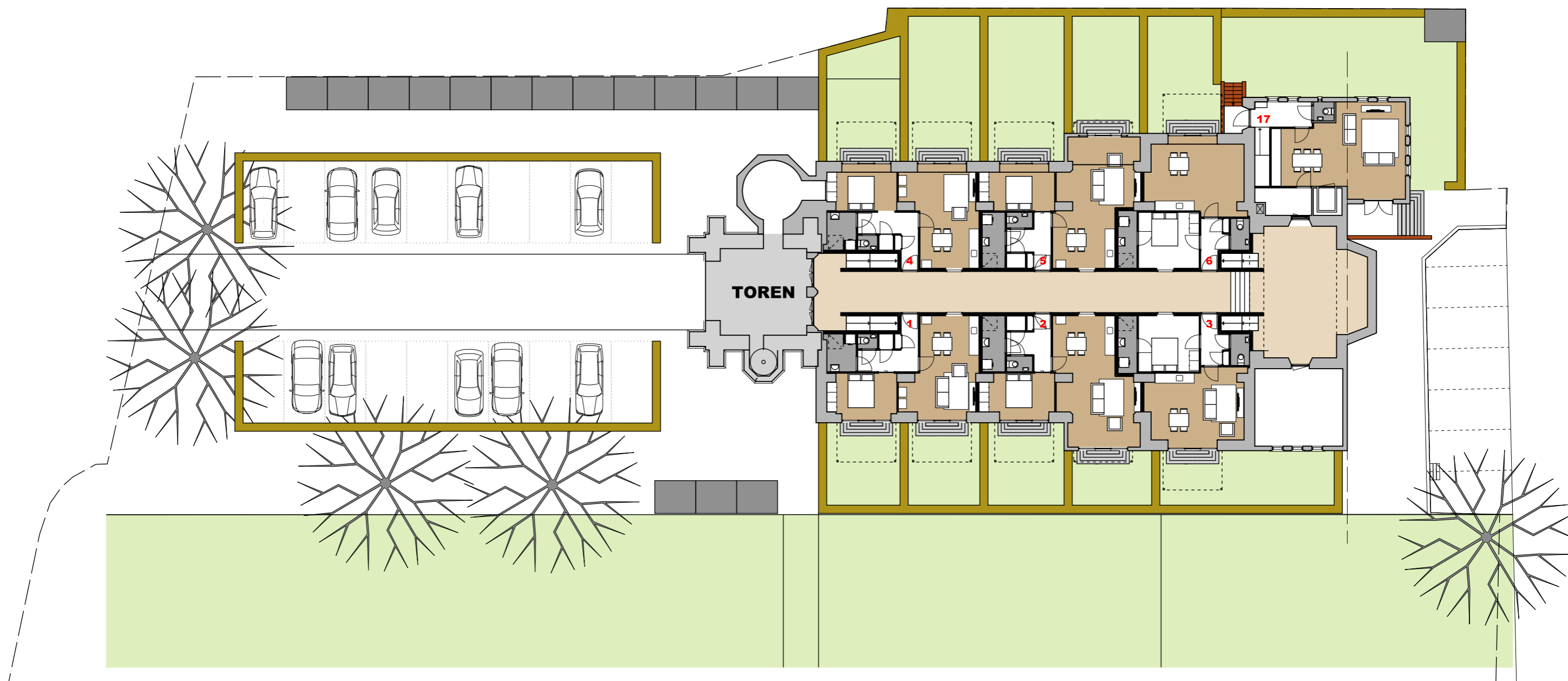
DOORSNEDE B-B



DOORSNEDE C-C



DOORSNEDE D-D



PERCEEL INRICHTING